

**\*\*TIGHTEN ALL FASTENERS AS YOU GO\*\*****4x4 DISPLAY • Assembly Instructions****1.**

• Place both platforms onto pallet (not shown), ensuring the base ridges fit into the slots on bottom of platforms. Screw the platforms onto the pallet using the 4 provided screws (innermost holes on the platform)

Ensure the platforms are aligned and tight to each other!

Insert (8) wooden dowels on platform tops, and begin panel assembly outside the box created by the dowels.

• Attach one side panel (a) to bottom end panel (b).

**2.**

• Repeat on opposite side.

**3.**

• Attach top end panel (c) to side panel (a) on one side only.

**4.****5.**

• Attach 4 sign caps to winglets, as shown (two left hand, two right hand); with a Philips screwdriver, tighten fastener underneath the cap until snug.

• Attach one set of winglets, with attached caps, to end panels, as shown.

Ensure cap is tight to the end panel, before tightening the fastener underneath.

**6.**

**All winglet fasteners must be tightened before proceeding!**

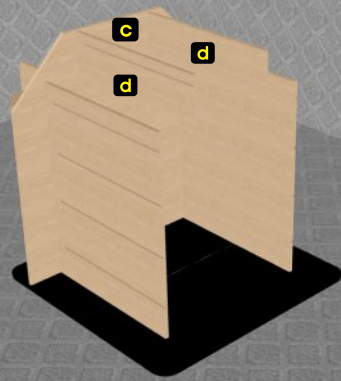
\* DOWNLOAD A HIGH-RESOLUTION PDF COPY AT [WWW.SSRTA.COM/DOCUMENTS](http://WWW.SSRTA.COM/DOCUMENTS) \*

[www.ssрта.com](http://www.ssрта.com) • [sales@ssрта.com](mailto:sales@ssрта.com) • (912) 427-7383/(866) 874-7383

© Schrock Systems RTA, Inc.

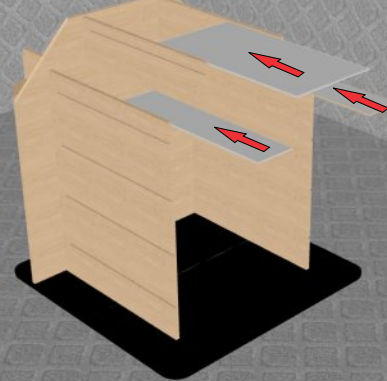


•Attach both top side panels (d) to backs of end panels (c).



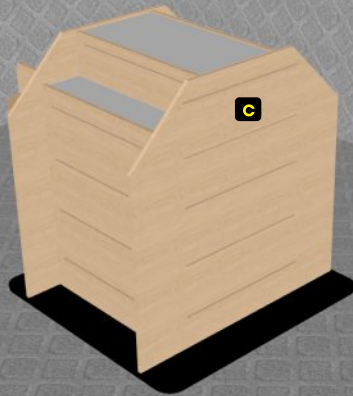
7.

•Slide lids in the slots provided by the back panels, from the end.



8.

•Attach the remaining top end panel (c).



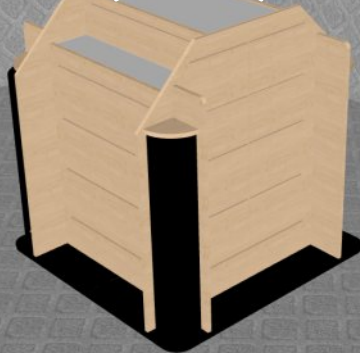
9.

•Attach the remaining two winglets, with attached caps.



10.

•Insert the signs into the slots in the winglets and end panels. Insert one side, bend in the other side on the bottom (use caution!) and slide up.



11.

\* DOWNLOAD A HIGH-RESOLUTION PDF COPY AT [WWW.SSRTA.COM/DOCUMENTS](http://WWW.SSRTA.COM/DOCUMENTS) \*

[www.ssрта.com](http://www.ssрта.com) • [sales@ssрта.com](mailto:sales@ssрта.com) • (912) 427-7383/(866) 874-7383  
© Schrock Systems RTA, Inc.

